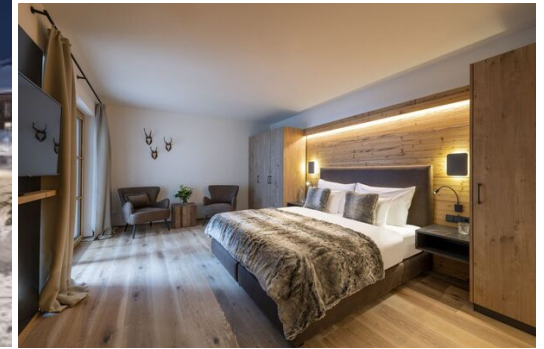


# Apartment for rent in Austria

Austria, Lech

Apartment - REF: TGS-A4486



Nº Bedrooms: 3  
Communal SPA

Nº Bathrooms: 3  
TV

Nº People: 6  
Gym/Fitness

M² built: 145 m²  
Massage room

Terrace  
Ski Room

Wifi

Indoor pool

Sauna

## A Sophisticated Retreat in Lech: Luxury and Comfort for Alpine Exploration

Discover an apartment sleeping 6, the **perfect home base to relax, entertain, and explore Lech**. This exquisite space seamlessly blends **modern design with charming nods to skiing history**, creating a unique and inviting atmosphere.

**Integrated and Characterful Living Spaces** The **open-plan kitchen, dining, and living area** is a fantastic space. Its **contemporary design**, sophisticated furnishings, and tasteful displays of beautifully preserved ski equipment and photography capture the essence of the Alps. A **large TV** is mounted on a central column that divides the living and dining areas, where up to eight can be seated. An **electric fireplace** on this side of the column adds a lovely ambiance for dinners with friends or family. The **well-equipped kitchen** overlooks this space, making for sociable cooking.

**Luxurious Bedrooms for Relaxation** The **spacious master bedroom** is finished in neutral tones with alpine furnishings and plenty of natural light pouring in through the windows and French doors. It also features an **en-suite bathroom with a separate shower**, and a cozy seating area where you can curl up with a book. There are a further **two generous double bedrooms**, both with en-suite shower rooms. All rooms have TVs, and the master enjoys **balcony access**.

**Wellness and Exclusive Amenities** Guests can fully unwind during their stay, with **shared access to the residence's stunning spa**, complete with an **indoor swimming pool**, sauna, hammam, and a tranquil relaxation area. In winter, the **heated boot warmers** in the private lockers ensure you'll awaken each day to toasty boots, ready to hit the slopes. The property also offers handy **shared laundry facilities** and a shared ski room. **Parking is guaranteed**, with indoor and outdoor spaces available (indoor on a first-come, first-served basis).

**Prime Location in Lech** This apartment is perfect for **families, friends, or corporate groups**, and is **excellently located**: just a 6-minute walk from the Schlosskopf chairlift and a 10-minute walk from the center

of Lech. When conditions allow, you can ski within 100 meters of the property, via a short section to the side of the piste.

**Flexible Accommodation Options** This apartment is available on a **bed & breakfast basis**, self-catered, or accommodation-only basis. Your stay in Lech will be an unforgettable luxury experience.











